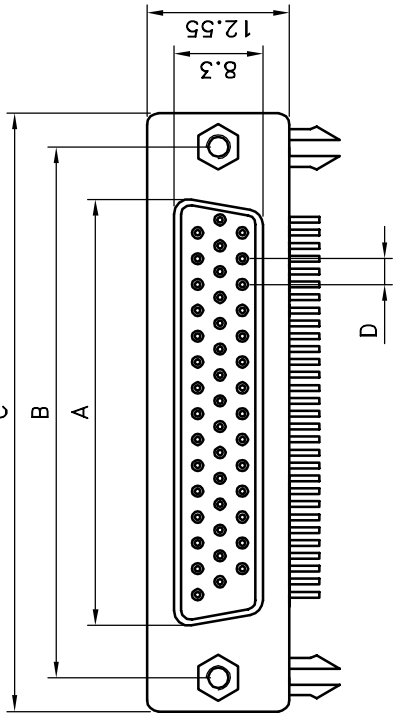


POSITION	A	B	C	D
15	16.33	25.00	30.80	2.29
26	24.66	33.30	39.20	2.29
44	38.38	47.10	53.10	2.29
62	54.84	63.50	69.40	2.41

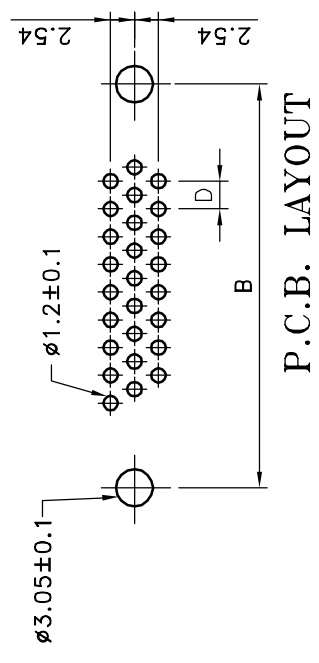
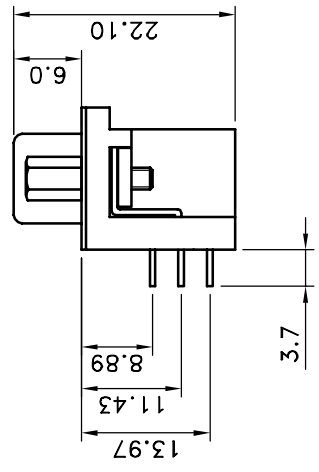
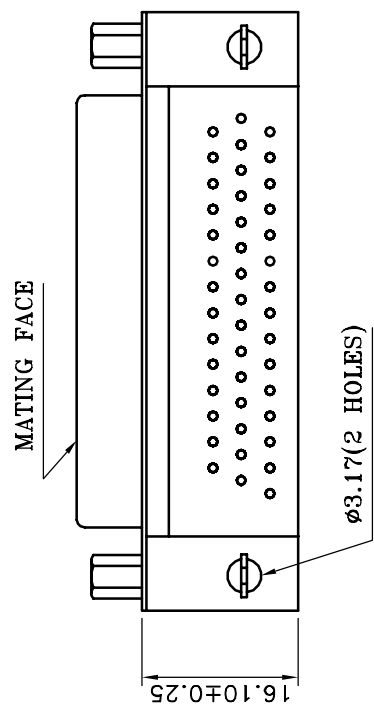
Specifications:
 Current rating:3.0A AC,DC
 Voltage rating:250V AC,DC
 Temperature range:-40°C ~ +85°C
 Contact resistance:30mohm max.
 Insulation:5,000Mohm min.
 Withstanding voltage:1,000V AC/Minute



Materials:
 Insulator:PBT Glass fiber 30%(UL94V-0)
 Contact:Copper alloy Nickel Undercoated, Gold plated
 Shell: Metal Iron with nickel plated

HOW TO ORDER
 5510-~~XXS~~-02A-01

- 01: GOLD PLATED
- RIVET W/BOARD LOCK /HEX SCREW
- S: FEMALE
- NO. OF POSITIONS



E	GENERAL TOLERANCE:		DRAWN: Jerry Chen	D	SIZE
	.X = ±0.2 .XX = ±0.15				
D	UNIT: mm		CHECKED: Jeremy	PART NO: 5510-XXS-02A-01	
C	SCALE:		APPROVAL: Mike	PROJECTION:	
B	SHEET: 1 / 1				
A	19-JAN-2005	FILE	Jerry Chen		
REV	DATE	BY			

