

SPECIFICATIONS

Mechanical

Contact Retention Force: 0.15kg min.**Durability :** 25 Cycles

Electrical

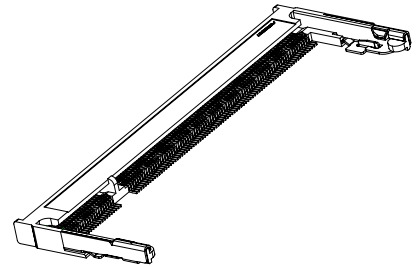
Voltage Rating: 25V**Current Rating:** 0.3A**Contact Resistance:** 50mΩ max.**Dielectric Withstanding Voltage:** 250V AC/1 min.**Insulation Resistance:** 100MΩ

Physical

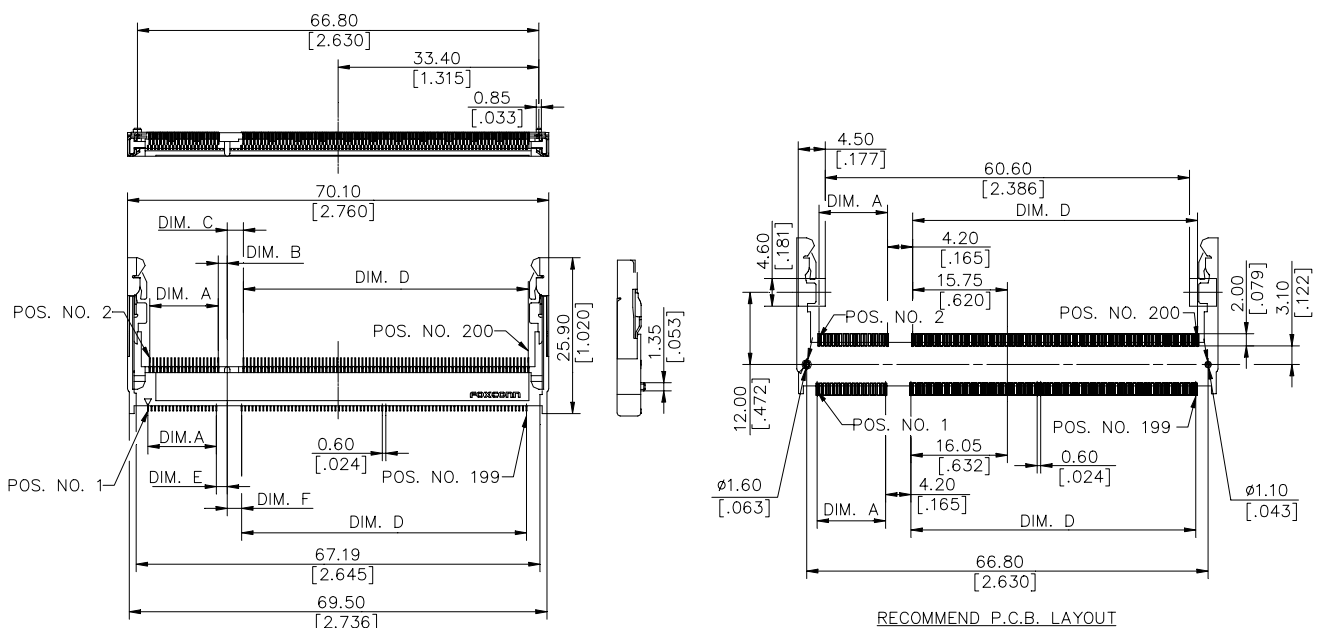
Housing: Thermoplastic, UL 94V-0 rated in Ivory Color**Contact:** Copper alloy**Plating:** See "ORDERING INFORMATION"**Metal Spring:** Copper alloy**Operating Temperature:** -40 to +85

DDR SO DIMM Socket

AS Series

4.0 mm Height SMT Type**0.6mm [.024"] Pitch****200Pos.**

DRAWING



ORDERING INFORMATION

PRODUCT NO.: A S 0 A4 2 6 - B4 *

Memory Module Socket

Horizontal Type

Single Row

No. of Pos.
A4=200 Pos.S=Standard Type
R=Reverse Type

B4 =4.0mm Height

Contact Area Plating
6=10u" Gold

SMT Type

AS0A426-B4R	11.40 [.449]	2.70 [.108]	1.50 [.059]
AS0A426-B4S	47.40 [1.866]	1.80 [.071]	2.40 [.094]
P/N	DIM. D	DIM. E	DIM. F
AS0A426-B4R	47.40 [1.866]	2.40 [.094]	1.80 [.071]
AS0A426-B4S	11.40 [.449]	1.50 [.059]	2.70 [.108]
P/N	DIM. A	DIM. B	DIM. C