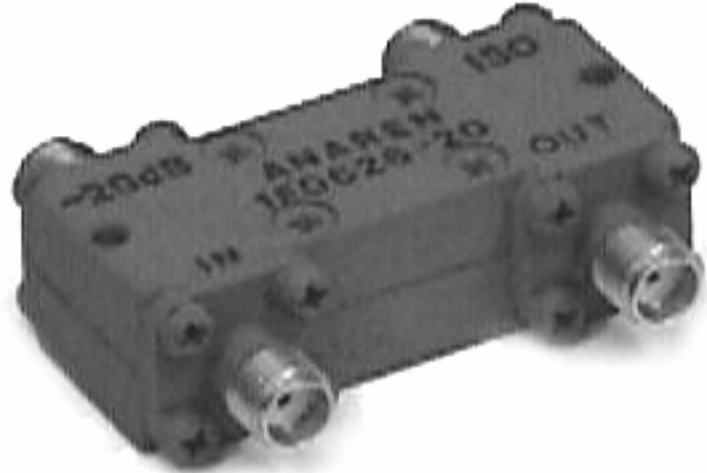


Directional Couplers H" Style

Applications

- Subassemblies
- Lab Systems
- Leveling Loops
- Power Monitoring
- Test and Calibration

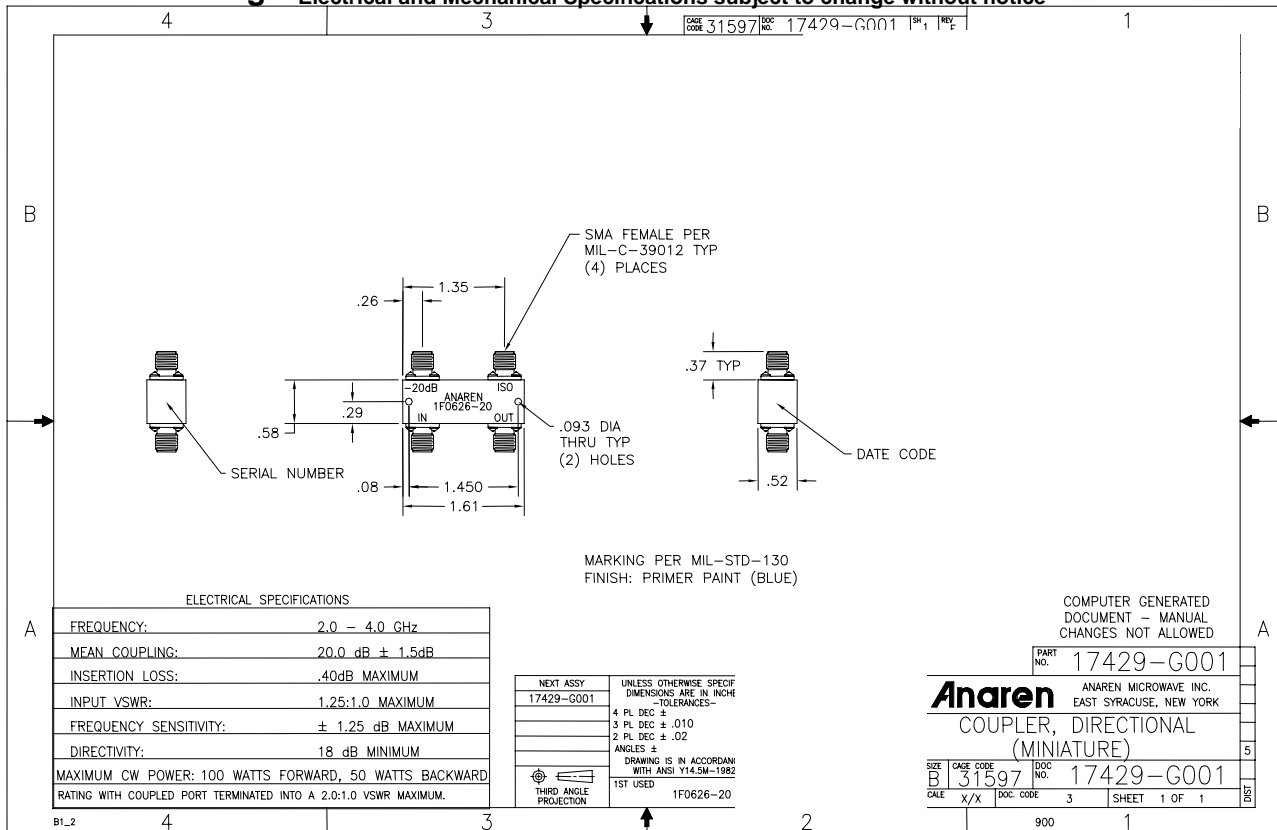


Features

- Military Grade
- 2.0 – 4.0 GHz
- "H" Style Configuration
- Connectors Per MIL-C-39012
- Rugged Aluminum Housing
- High Directivity
- Meets MIL-E-5400 Class 3 Requirements

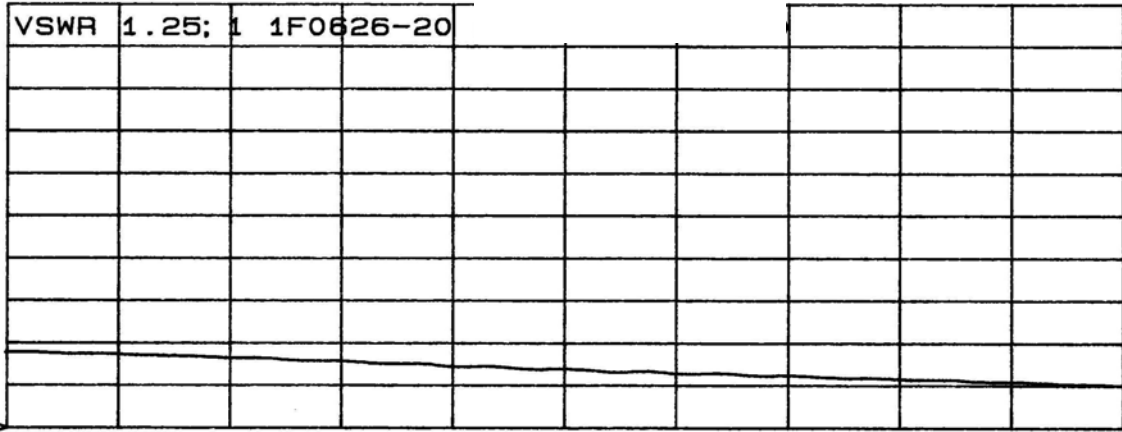
NOTES: The power rating applies when optional termination is supplied by Anaren and coupled port VSWR is 2.0:1 or less. Higher power can be handled with a lower VSWR termination
Electrical and Mechanical Specifications subject to change without notice

Outline Drawing

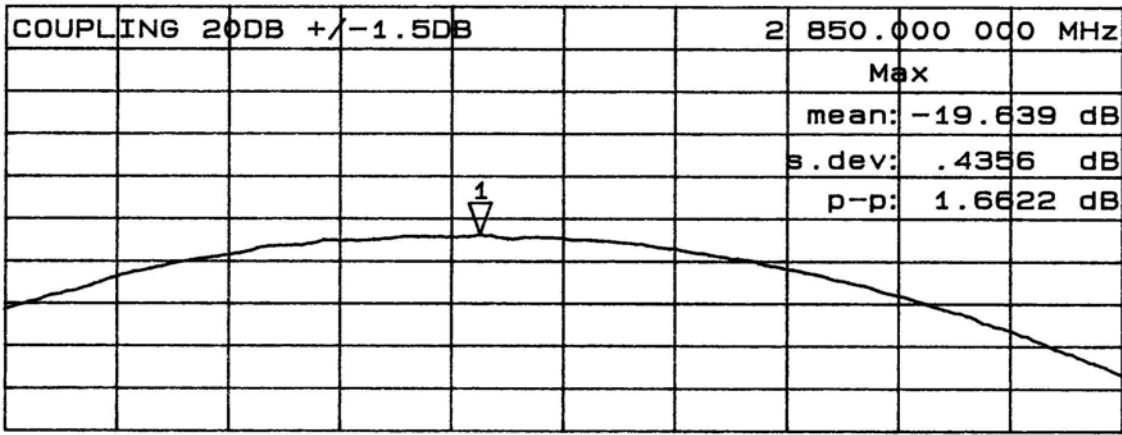


Typical Test Data Plots

CH1 S₁₁ SWR 50 m / REF 1



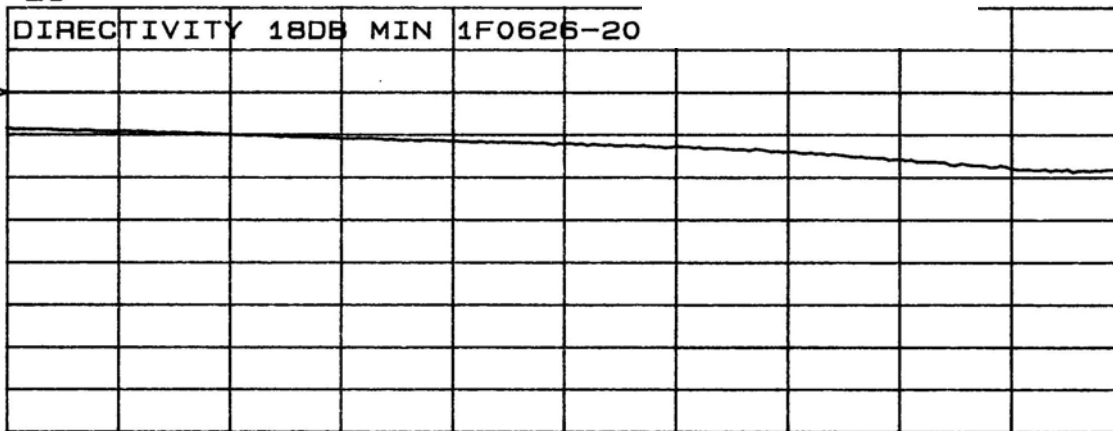
CH2 S₂₁ log MAG .5 dB/ REF -20 dB 1: -19.181 dB



x2 START 2 000.000 000 MHz STOP 4 000.000 000 MHz

Typical Test Data Plots

CH1 S₂₁/M log MAG 5 dB/ REF -18 dB



CH2 MEM log MAG .1 dB/ REF 0 dB

